

WHAT:
Project Tour of
VMG Health

WHEN:
Tuesday, October 18th
5:30-6:15:
Networking on 13th Floor
6:15-6:45:
Panel Discussion
6:45-7:30: Tours
7:30-8:00: Desserts

WHERE:
Chateau Plaza
2515 McKinney Ave.
13th Floor
Dallas, TX 75201

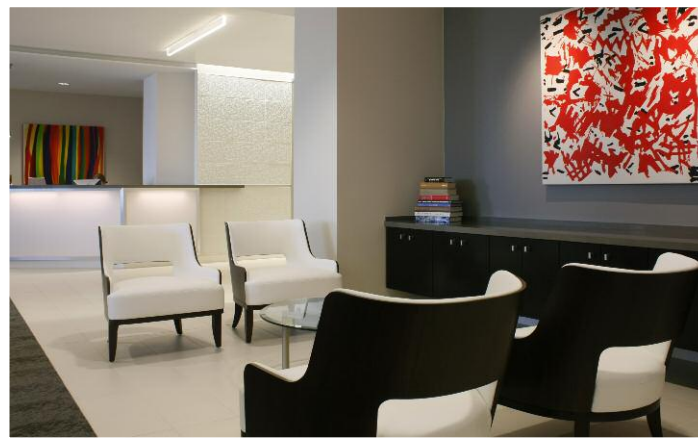
PARKING:
Free parking in attached garage
(enter on McKinney Ave.)

RSVP:
Friday, October 14th
<https://iida.ejoinine.org/vmg>

COST:
Free for IIDA members,
\$35 for non-members

Join us for a Panel Discussion and Project Tour

We
thought
outside
the box



to make it
work inside
the walls.

Tour Underwriters:



WORKPLACE | SOLUTIONS

Designed by:



TX OK CHAPTER SPONSORS

PLATINUM

Allsteel, Bentley Prince Street, Crossville Porcelain Stone, Furniture Marketing Group, **G.L. Seaman & Company**, Herman Miller, Hossley Lighting Associates, J. Tyler, JCS, McCoy Workplace Solutions/ McCoy Floor Covering/ Rockford Business Interiors, OM Workspace, Shaw Contract Group, **Tandus Flooring**, Teknion, **The Mohawk Group/Daltile**

GOLD

3form, Caesarstone, Corporate Source, Enviroglass, Humanscale, InterfaceFLOR, J+J/Invision, **KI**, Mannington Commercial, Milliken/Constantine, Office Pavilion, Paoli, Patcraft, Professional Furniture Consultants, Southwest Solutions Group, **Steelcase**, **TRI-KES**

SILVER

Armstrong, Bauhaus Interiors Group, **BKM Total Office of Texas**, Business Interiors, Business Interiors by Staples, Columbia Forest Products, Concept Surfaces, Connectrac, Cronan & Associates, Dauphin, Debner+Company, Forbo Flooring Systems, **Gunlocke**, Hart Texas, **Haworth**, Interceramic, J Fyffe Company, **Kenmark**, **Kimball Office**, **Knoll**, **KSM Associates**, MasterTile, MDI Resources, National Office Furniture, nora Systems Rubber Flooring, OFS Brands, **PS Gerry**, Putterman Scharck and Associates, Reid Cooper Associates, Royer & Schutts Commercial Interiors, Skyline Art Services, Stone Solutions, **The Ofis**, The Spencer Company, USG Interiors, Vanguard Environments, Vector Concepts, **Wilson Office Interiors**, Workplace Resource

Legacy Sponsors in **Bold**

2011